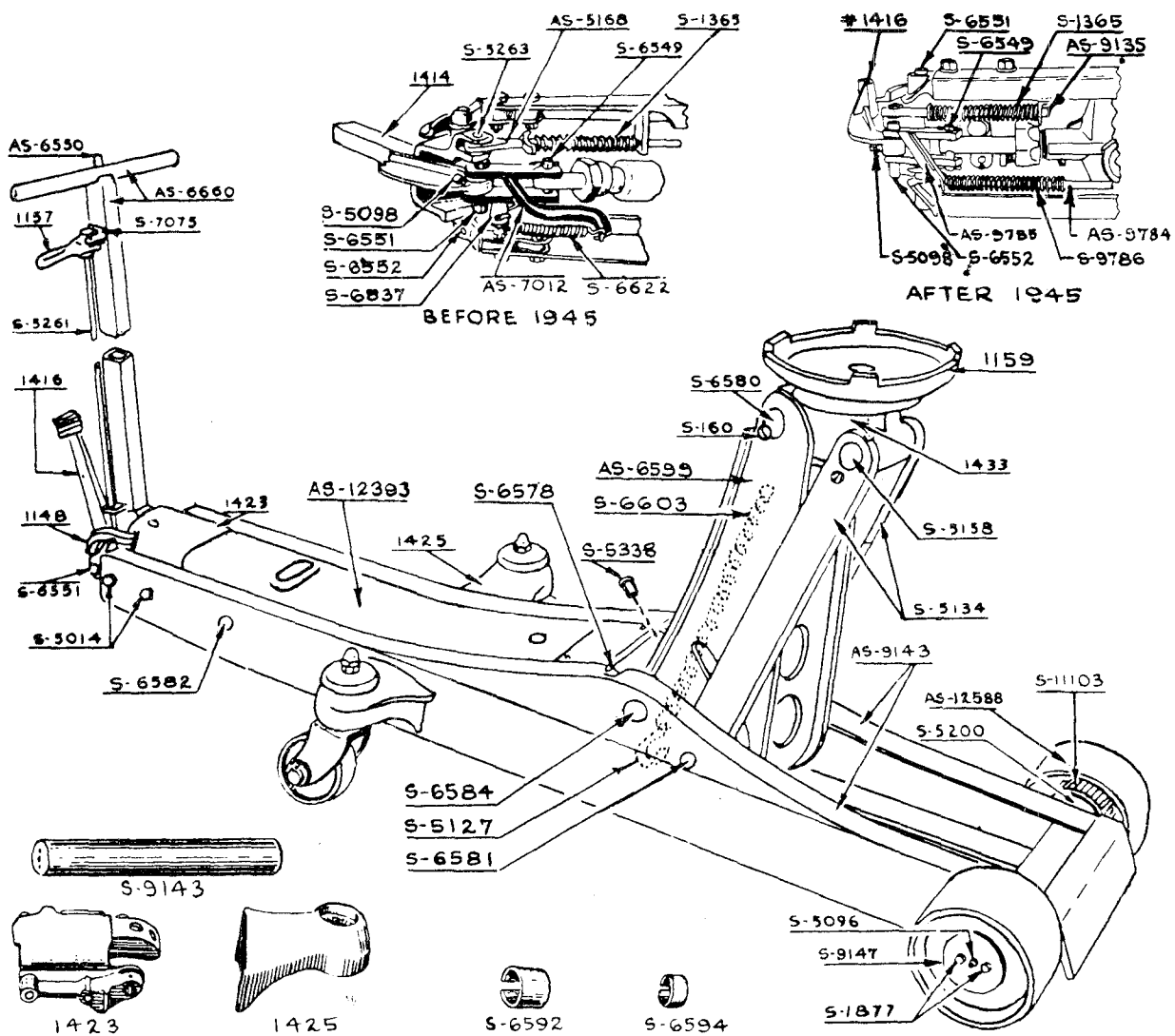


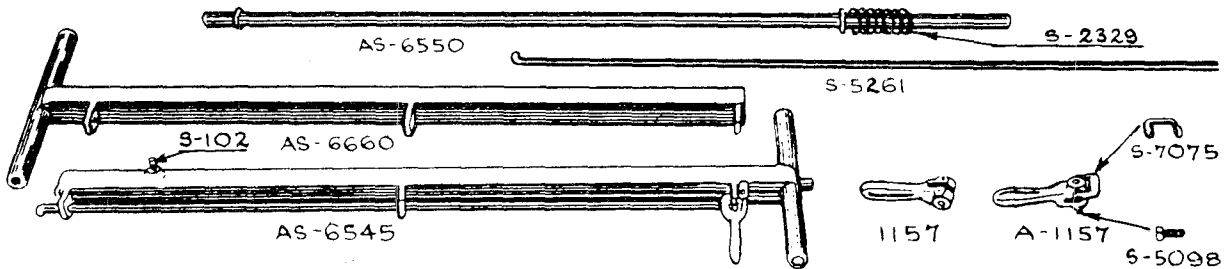
**PARTS LIST**  
**WA-75 WEAVER GIANT LO-HI-DRAULIC JACK (10 TON)**

Order All Parts by Number

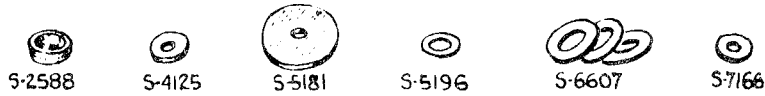
**FRAME AND LIFTING ARM ASSEMBLIES**



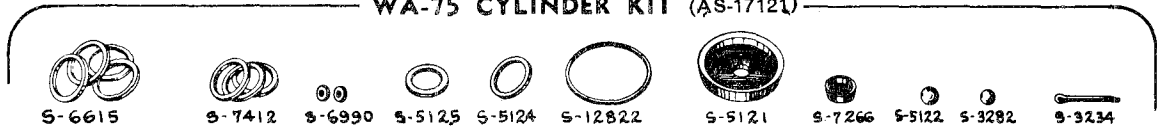
**HANDLE ASSEMBLY**



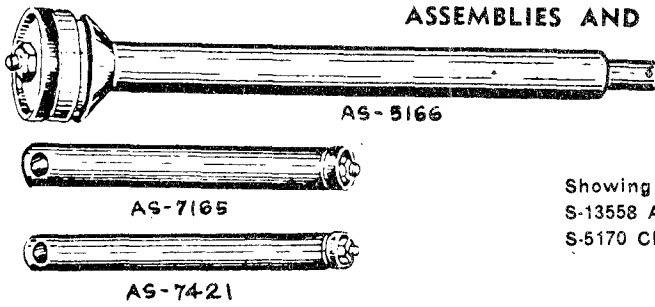
**WA-75 WEAVER GIANT LO-HI-DRAULIC JACK—Continued**  
**CUP LEATHERS, PACKINGS, GASKETS, AND FOLLOWERS**



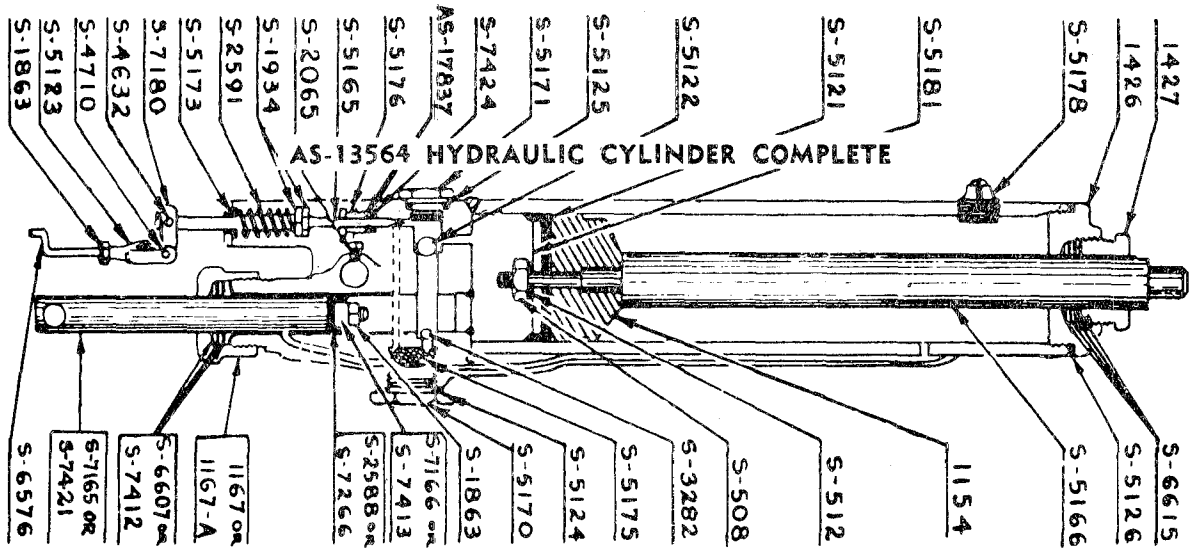
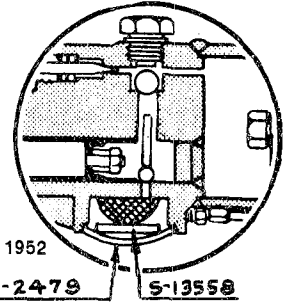
**WA-75 CYLINDER KIT (AS-17121)**



**ASSEMBLIES AND STEEL PARTS**



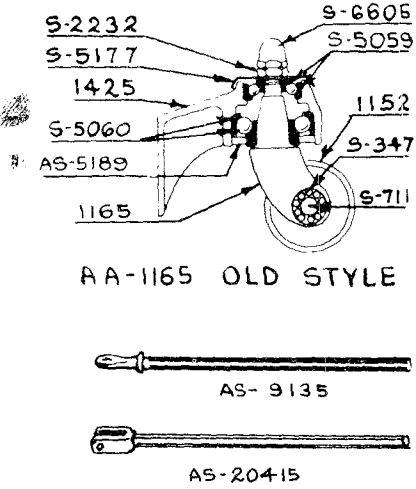
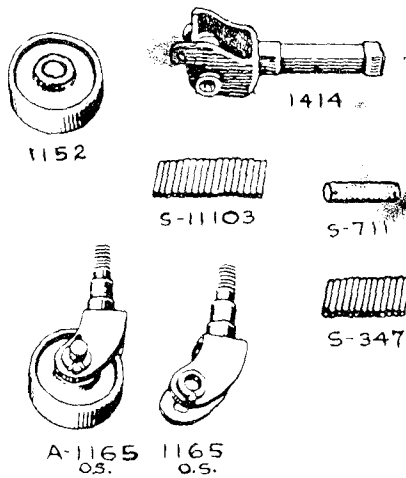
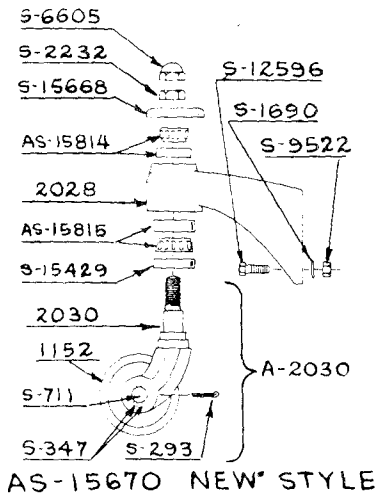
Showing S-2497 Welch Plug and S-13558 Alnico Magnet, replacing S-5170 Clean-out plug. Since July 1, 1952



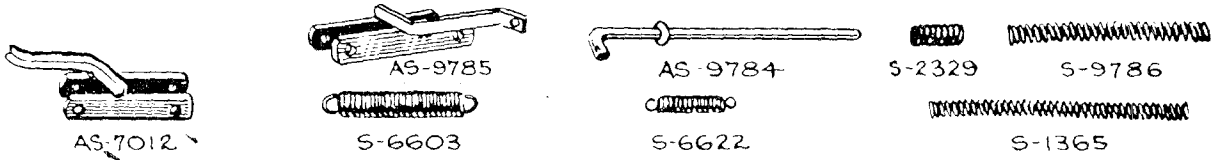
**\* SPECIAL NOTE** — The above Hydraulic Cylinder has been manufactured with two different size Pump Plungers, viz: 7/8" Diameter and 1" Diameter. When ordering Pump Plunger, Pump Cup Leather or Pump Packing, check size of present Plunger and order parts corresponding to this size.

WA-75 WEAVER GIANT LO-HI-DRAULIC JACK—Continued

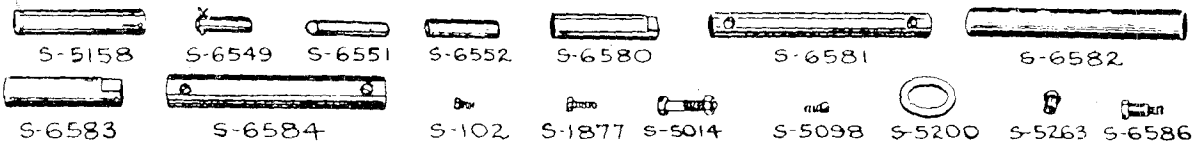
CASTER ASSEMBLY, FRONT WHEELS AND BEARINGS



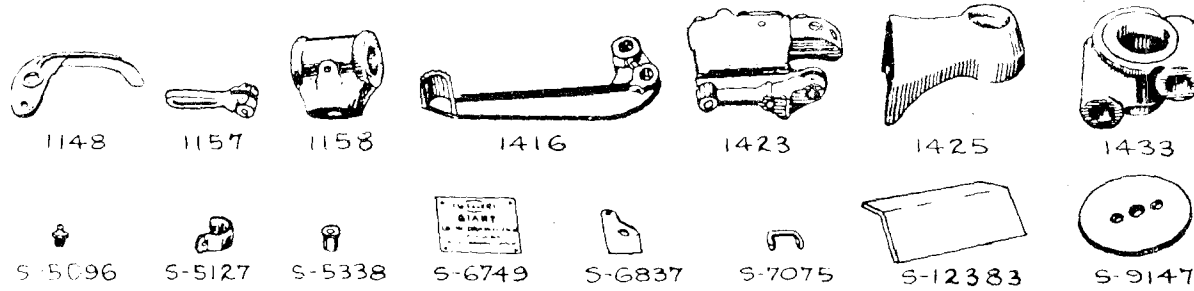
PUMP LINK ASSEMBLIES, OLD AND NEW STYLE AND SPRINGS



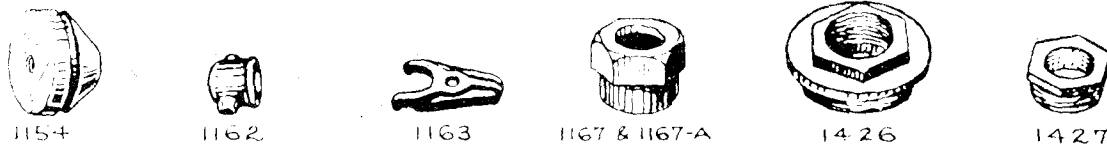
PINS, SCREWS, RIVETS AND WASHERS



MISCELLANEOUS CASTINGS AND MISCELLANEOUS STEEL PARTS



CASTINGS



MISCELLANEOUS STEEL PARTS

