

AIR OPERATED END LIFT

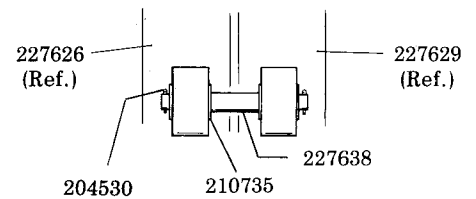
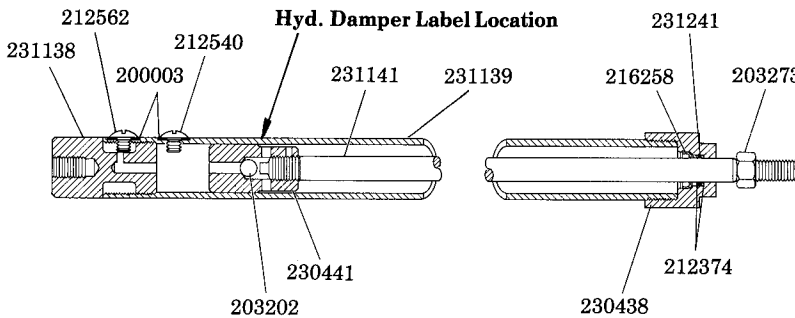
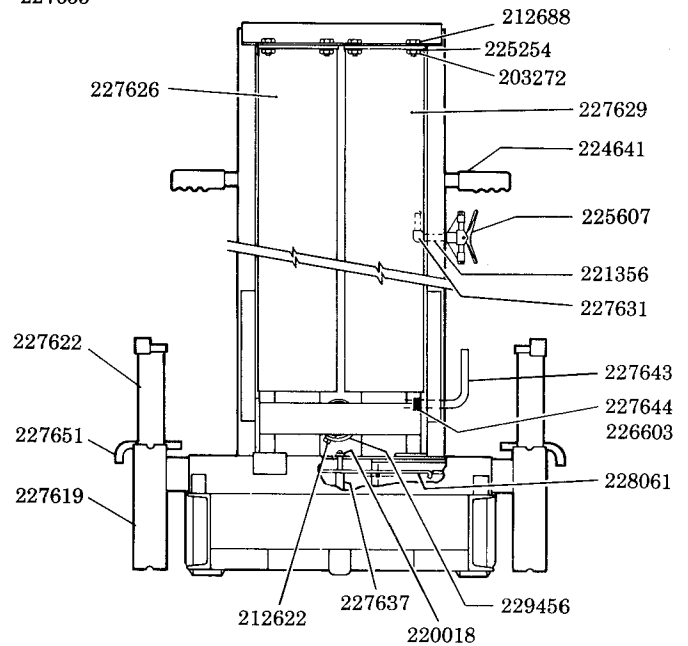
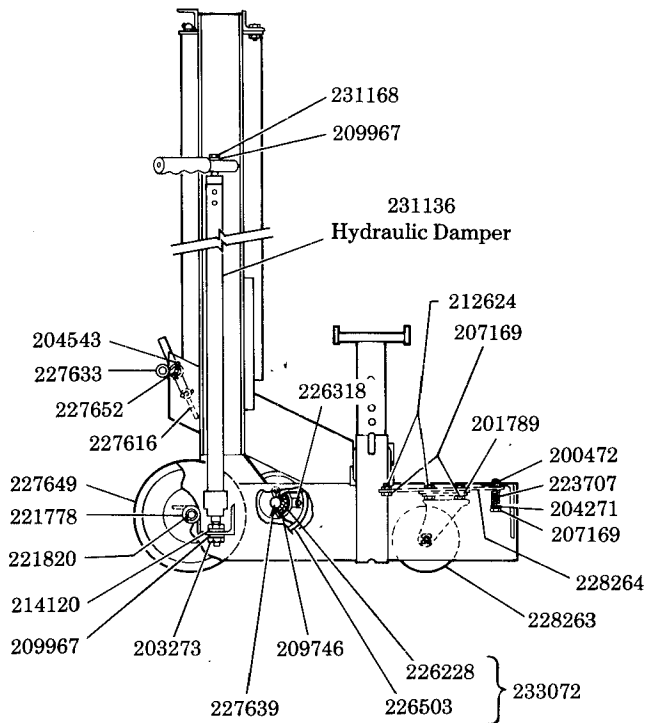
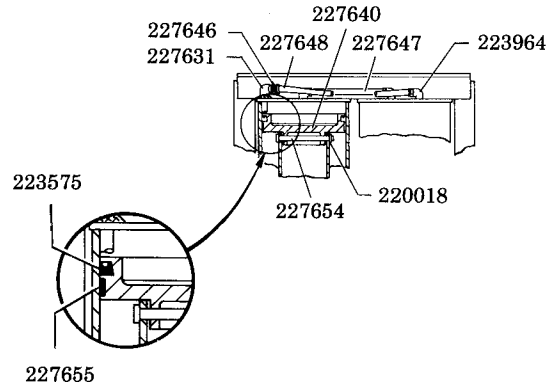
7 TON CAPACITY

Model 91-692, 93692 95692, YA-692

Series "C"

MODEL	*LABEL KIT NO.	REPAIR KIT NO.	REPAIR KIT FOR 231136 HYDRAULIC DAMPER
91-692	240081	240513	240512
93692	240082	240513	240512
95692	240083	240513	240512
YA-692	240084	240513	240512

* **IMPORTANT:** Replace label on hydraulic damper as well as all other labels.



231136 HYDRAULIC DAMPER

LINCOLN ST. LOUIS



SECTION - **W4**
PAGE - **6**

TROUBLESHOOTING

PROBLEM	SOLUTION
1) Will not lift load.	Air pressure might be too low — 200 psi minimum air pressure to lift rated load. Air hose might be plugged — Remove obstruction from air hose. Air hose I.D. might be too small — Use larger air hose.
2) Will not lower.	Air valve might be incorrectly assembled to jack — Assemble as shown in Figure 1. The safety bar might be engaged. Admit air until the jack raises slightly, then disengage the bar.
3) Jack is very bouncy.	Cylinder might need lubrication — Apply #630-AAA LUBRIPLATE to cylinder wall.

If the above procedures do not correct the problem, contact your nearest service depot. When submitting any jack or equipment to be repaired, be sure to state the nature of the problem and indicate whether an estimate of the repair cost is needed.

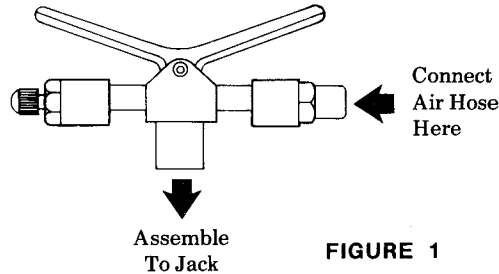


FIGURE 1

SPECIFICATIONS

Low Pickup Height	High Lifting Point	Power Raise	Saddle Spread	Clearance (Air Tank to Front of Saddle)	Min. psi for Rated Load
13-1/2"	58-1/2"	32-1/2"	29" - 47"	12-3/4"	200

SERVICE PARTS

PART	QUAN.	DESCRIPTION	PART	QUAN.	DESCRIPTION	PART	QUAN.	DESCRIPTION
† 200003	2	Gasket	221778	4	Washer	227643	1	Safety stop handle
200472	2	Screw	221820	2	Retaining ring	227644	1	Safety stop spring
201789	4	Lockwasher	* 223575	2	U-cup	227646	1	Hose coupling
203202	1	Ball	223707	2	Spring	227647	1	Air hose (short)
203272	4	Nut	223964	3	Elbow	227648	1	Air hose (long)
203273	3	Nut	224641	2	Grip	227649	2	Wheel (rear)
204271	2	Washer	225254	4	Lockwasher	227651	2	Position pin
204530	2	Cotter pin	225607	1	Air valve	227652	1	Cross pin
204543	2	Cotter pin	226228	2	Bushing	227654	2	Pin
207169	8	Nut	226318	2	Grease fitting	*227655	2	Slip ring
209746	26	Roller	226503	2	Roller wheel	228061	1	Positioning bar ass'y.
209967	4	Lockwasher	226603	1	Roll pin	228263	1	Caster
210735	4	Washer	227616	1	Handle stop assembly	228264	1	Caster plate
† 212374	2	Washer	227619	2	Saddle arm assembly	229456	1	Skid ring
212540	1	Screw	227622	2	Saddle assembly	230438	1	Bottom cap
212562	1	Screw	227626	1	Air cylinder ass'y. (R.H.)	230441	1	Piston rod
212622	1	Bolt	227629	1	Air cylinder ass'y. (L.H.)	231136	2	Hydraulic damper ass'y.
212624	5	Bolt	227631	2	Air tube (elbow)	231138	1	Cylinder plug
212688	4	Bolt	227633	1	Tank retainer assembly	231139	1	Damper cylinder
214120	2	Spacer	227637	1	Pin	231141	1	Piston rod
† 216258	1	Pump gland cover	227638	1	Spacer	231168	2	Bolt
220018	3	Retaining ring	227639	1	Axle	†231241	1	Quad ring
221356	1	Pipe nipple	227640	2	Piston	233072	2	Wheel & bushing ass'y.

* Included in 240513 Repair Kit.

† Included in 240512 Repair Kit for 231136 Hydraulic Damper.