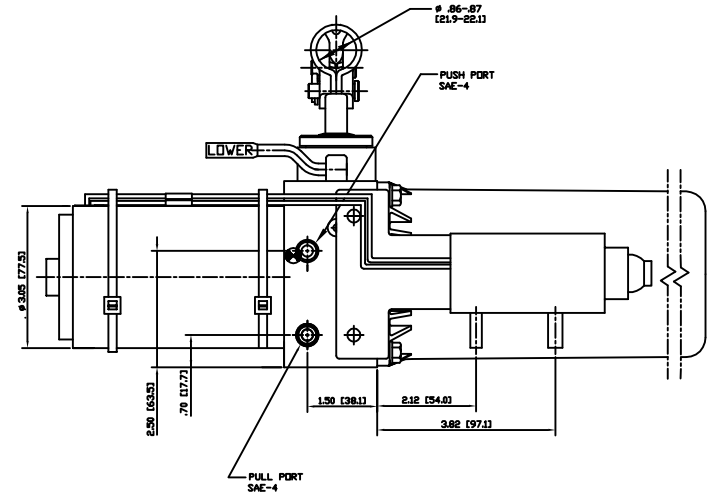
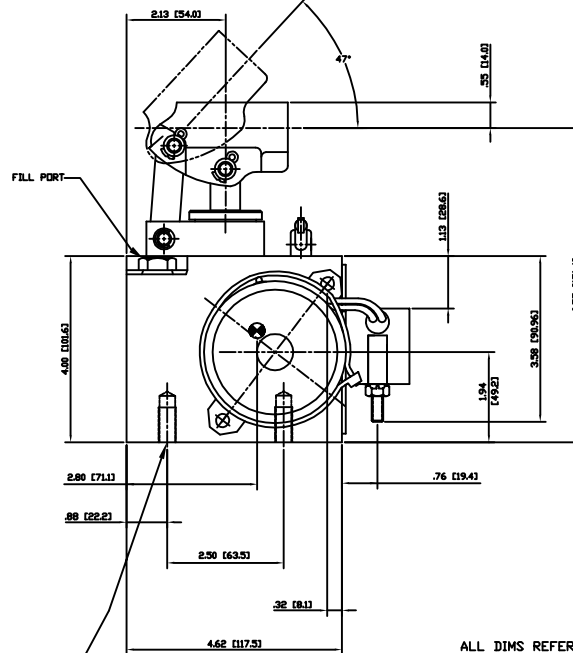
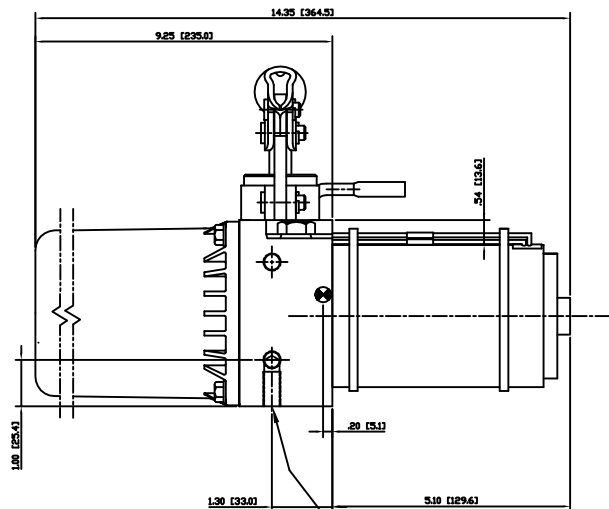


**SPECIFICATION:**

RELIEF VALVE SETTING	2700-3000 PSI [206,8-186,2 BAR]
MAX. OPERATING PRESSURE	3500 PSI [241,3 BAR]
RECOMMENDED OPERATING TEMP.	-30°F TO 160°F [-34°C TO 71°C]
PUMP PLUNGER DIA.	.69 [17,5]
PUMP PLUNGER EFFECTIVE AREA	.371 SQ IN [2,39 SQ CM]
STROKE	1.00 [25,4]
VOLUME PER STROKE	.37 CU IN [6,06 CU CM]
MOTOR VOLTAGE	12 VDC NOMINAL
FLOW @ 2500 PSI @ 70°F	25CU IN/MIN [4.1 L/MIN] MINIMUM
CURRENT @ 2500 PSI @ 70°F	30 AMPS
RESERVOIR CAPACITY	60 CU IN [983 CU CM] USEABLE
RESERVOIR VENT RELIEF SETTING	50-75 PSI [3,4-5,2 BAR]
MAX. PORT FITTING TORQUE	10-12 FT LBS
PUMP RETURN ORIFICE DIA.	.018 [0,46]
MAX. MOUNTING BOLT TORQUE	16-19 FT LBS
MIN. MOUNTING BOLT ENGAGEMENT	.50 [12,7]
RECOMMENDED FLUID	PER MIL-H-5606 OR EQUIV. DO NOT USE ATF
WEIGHT	11.5 LBS [5.2 kg]
PAINT SPECIFICATIONS	BLACK PER PPI199029
● CENTER OF GRAVITY W/O OIL	SEE PRINT

RAISE / LOWER SHIFT LEVER TO BE IN "LOWER" POSITION, AS SHOWN DURING VEHICLE OPERATION.



ALL DIMS REFERENCE ONLY

MOUNTING HOLES  
3/8"-16 UNC-2B  
.75 [19.0] DEEP  
4 HOLES

<b>SYMBOL:</b> ◆ KPC(S): QTY.(0)    ◊ SERIALIZED DIMENSIONS ◆ KPC SAFETY: QTY.(0)    ▲ CHANGE TRIANGLE ○ BOM BALLOON: (3/8" #) <b>NATIVE GEOMETRY:</b> <input type="checkbox"/> PRO/E: <input type="checkbox"/> CATIA: <input checked="" type="checkbox"/> ACAD: <input type="checkbox"/> OTHER:	<b>SPECIFICATIONS</b>  DRAWING STANDARDS per ASME Y14.5M-1994 WHERE USED (REF)    MODEL (REF) EP35013301    EP35013301 XDS FILE    DRWG SIZE 013949.dwg    E	DIMENSIONS IN BRACKETS ARE IN MM FRESH UNLESS SPECIFIED Ra, μ [Rq, m]	RELEASED TO PRODUCTION ECO 31472 TRD 2/22/99
			TITLE: INSTALLATION DRAWING, D.C. TILT PUMP EP35013301